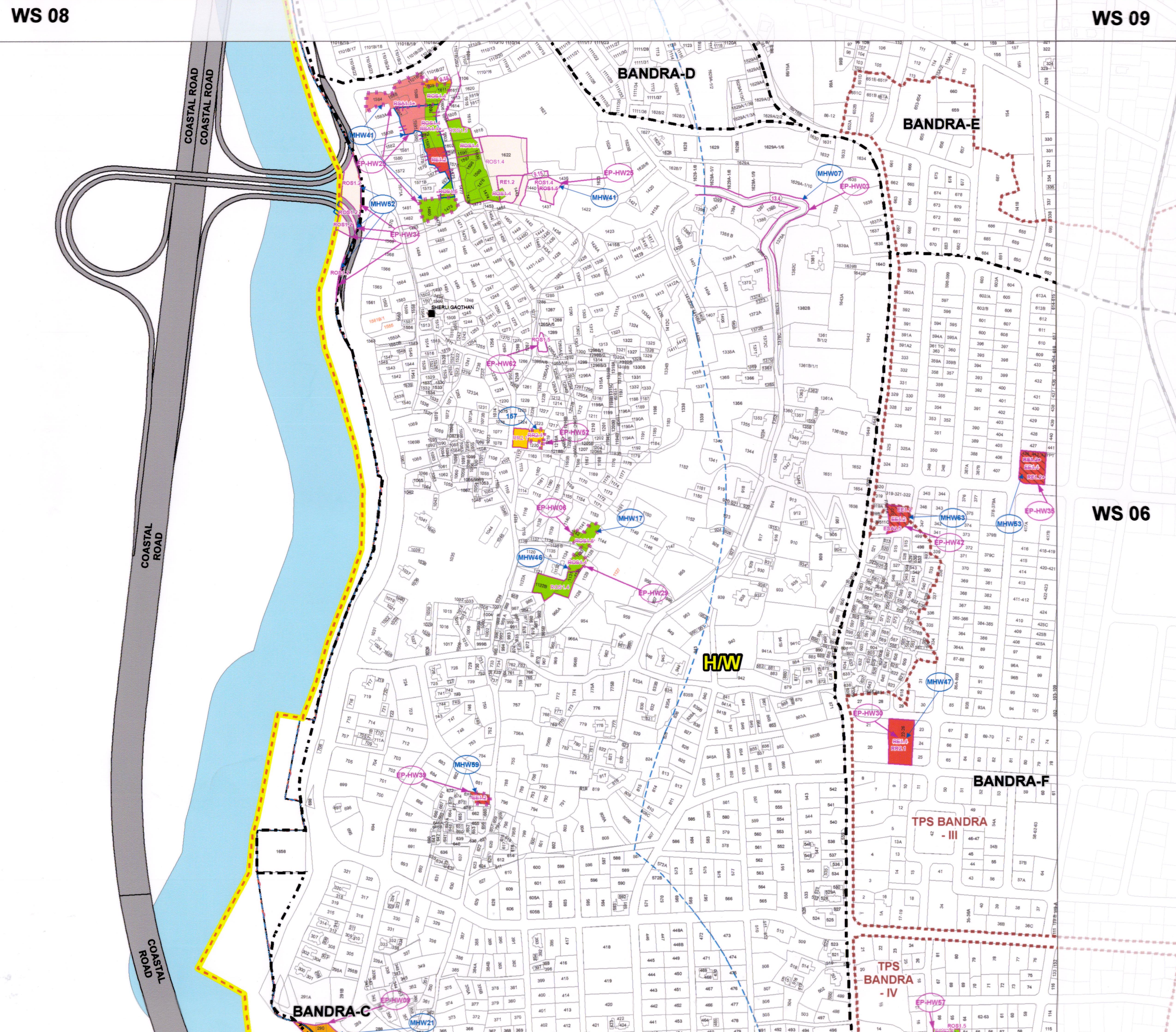


WS 08

WS 09



WS 02

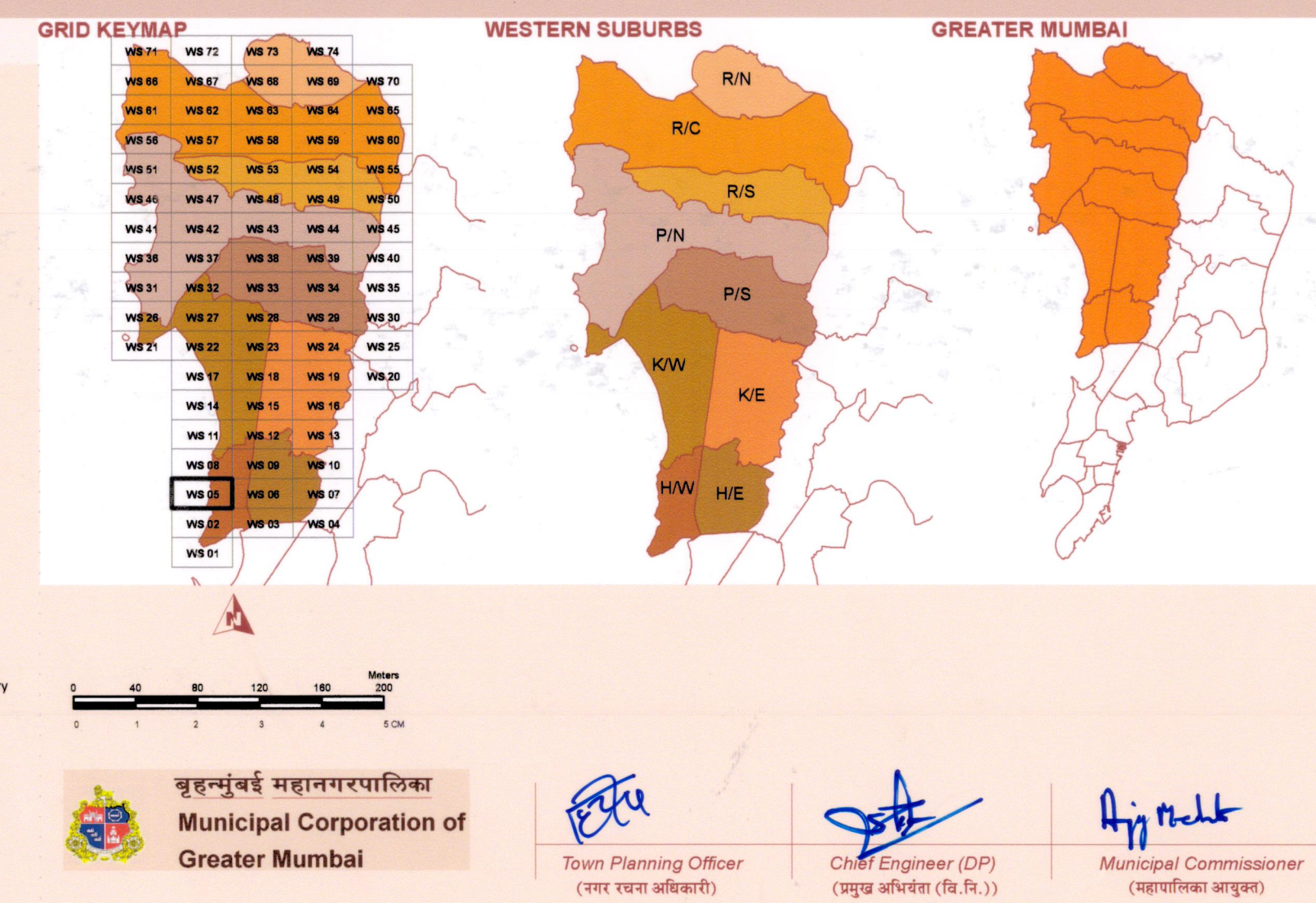
WS 03

Table with 5 columns: S.N., EP No., Modification No., Proposal as per published Plan under Section 38 of MR & TP Act 1966, Modification proposed by Planning Authority and shown on submitted plan under Section 30 of the MR&TP Act 1966, Substantial Modification published by the Government under Section 31(1) of the MR & TP Act 1966. It lists various planning zones and their modifications.

कलम ३० नुसार केवढल MODIFICATION u/s 30 SHOWN AS
कलम ३१ नुसार साभूत स्वरुपचे बदल/ वागळलेला भाग EXCLUDED PART/ SUBSTANTIAL MODIFICATION u/s 31 SHOWN AS

Legend

Legend section containing various symbols and codes for different categories: Education, Health, Open Spaces, Public Utilities and Facilities, Social Amenities, Municipal Services, Transportation, Amenity Plots, Public Utilities & Facilities, Social Amenities, Municipal Services, Primary Activities, Land Use Zones, Area Under Regulatory Framework, Road, and Amenity Plots.



विकास योजना - २०३४ बृहन्मुंबई
महाराष्ट्र शासनाने महाराष्ट्र प्रादेशिक व नगरपालिका अधिनियम १९६४ च्या कलम २९(१) अन्वये
शासन सूचना क्र. टीपीसी-२९७४/६२५/प्र.क्र.११८/२०१७/डी/गि-११ दिनांक ८ मे २०१८ अन्वये
प्रसिध्द केलेले बागळलेले साभूत स्वरुपचे केवढल
DEVELOPMENT PLAN-2034 OF GREATER MUMBAI
SUBSTANTIAL MODIFICATION (EXCLUDED PART)
PUBLISHED BY: GOV. OF MAHARASHTRA U/S 31(1) OF MR & TP ACT, 1966 VIDE
NOTICE NO. TPB-43177629/CIR-1182017/TP/UD-11 DATED 08TH MAY 2018

NOTE: A DEVELOPMENT PLAN IS REQUIRED WITHIN THE BUFFER AREA MARKED FOR HIGHWAY, RAILWAY, NALLA, NALLA OR CANAL AREAS... THE BUFFER AREAS MARKED FOR HIGHWAY, RAILWAY, NALLA, NALLA OR CANAL AREAS... THE BUFFER AREAS MARKED FOR HIGHWAY, RAILWAY, NALLA, NALLA OR CANAL AREAS...